

## COUNTRY GENERAL INFORMATION (PAHO, 2015; WHO, 2015)

Total population:	6,724,088
Gender F /M (%):	49.2 / 50.8
Population, age group <15/ ≥15 years (%):	31 / 69
Life expectancy at birth (F/M, years) (2015):	76 / 72
GDP (PPP int \$):	8,944
Income status:	Lower middle
Number of 2 <sup>nd</sup> sub-national administrative level divisions, name:	317, District

## EPIDEMIOLOGY

	VL	CL <sup>d</sup>	PKDL	MCL <sup>d</sup>
Endemicity status:	Endemic	Endemic	Non endemic	Endemic
Number of new cases (incidence):	92	89	N/A	33
Number of relapses <sup>1</sup> :	No data	No data	N/A	No data
<b>Total number of cases:</b>	<b>92</b>	<b>89</b>	<b>N/A</b>	<b>33</b>
Imported cases (#, %):	No data	3, 3%	N/A	1, 3%
Gender distribution (% F):	29%	21%	N/A	N/A
Age group distribution (% < 5/5-19/>19) <sup>a</sup> :	(30/10/59)	(2/21/76)	N/A	N/A
Incidence rate (cases/10,000 population in endemic areas) <sup>b,c</sup> :	0.3	0.8	N/A	N/A
Number of endemic 2 <sup>nd</sup> sub-national administrative level divisions <sup>c</sup> :	43	40	N/A	N/A
Population at risk <sup>2,c</sup> (% # at risk/total population):	46% 3,060,725/ 6,724,088	24% 1,589,203/ 6,724,088	N/A	N/A
Was there any outbreak?	No	Yes	N/A	N/A
Number of new <sup>3</sup> foci:	No data	No data	N/A	N/A

N/A = Not applicable; <sup>1</sup> Relapse in this country is defined as: "A patient who returns with signs and symptoms after being initially cured"; <sup>2</sup> Defined as "Number of people living in 2<sup>nd</sup> sub-national administrative level endemic areas"; <sup>3</sup> Defined as "In this reporting period, an area at the 2<sup>nd</sup> sub-national administrative level reporting cases for the first time ever"; <sup>a</sup> In the Region of the Americas, the age groups used for reporting are <5 years, 5-9y, 10-19y, 20-49y and 50y and older; <sup>b</sup> In the Region of the Americas, CL incidence rate is usually calculated /100 000 population; compared with other countries, reported here as /10 000 population; <sup>c</sup> In the Region of the Americas, the endemic areas used for the calculation of incidence rate and population-at-risk were the lowest sub-national administrative levels reporting cases in 2015; <sup>d</sup> In the Region of the Americas, the number of new cases, total number of cases and cases by month include CL only. All other indicators for CL include MCL cases.

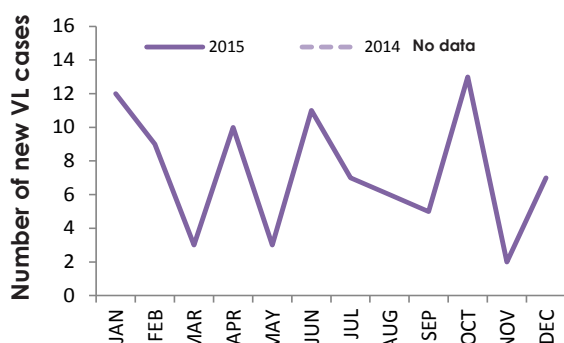
## Monthly distribution of new cases (January-December)<sup>e</sup>

2015	JAN	FEB	MAR	APR	MAY	JUN	JUL	AUG	SEP	OCT	NOV	DEC
VL	12	9	3	10	3	11	7	10	5	13	2	7
CL <sup>d</sup>	5	5	6	5	7	1	13	6	41	0	1	1

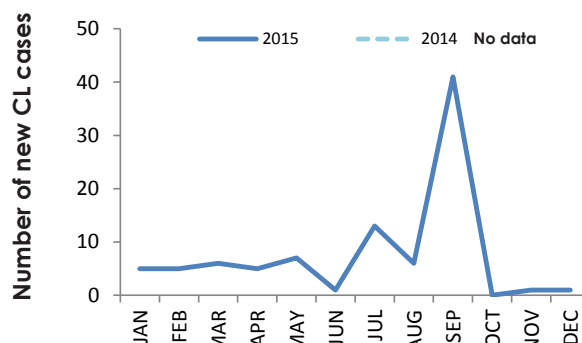
VL = visceral leishmaniasis; CL = cutaneous leishmaniasis; PKDL= post-kala-azar dermal leishmaniasis; MCL = mucocutaneous leishmaniasis

<sup>e</sup> Monthly data differ from the total number of cases due to an inconsistency in the national information system

### Visceral leishmaniasis

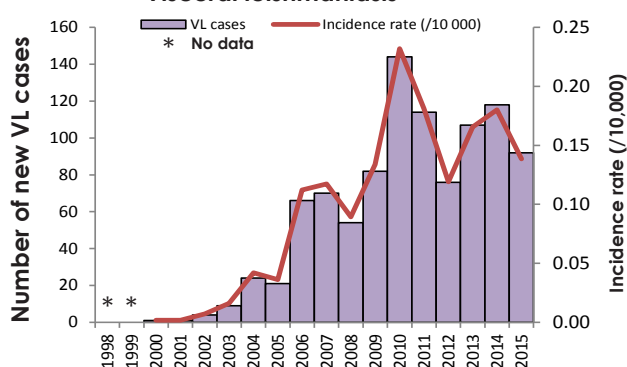


### Cutaneous leishmaniasis

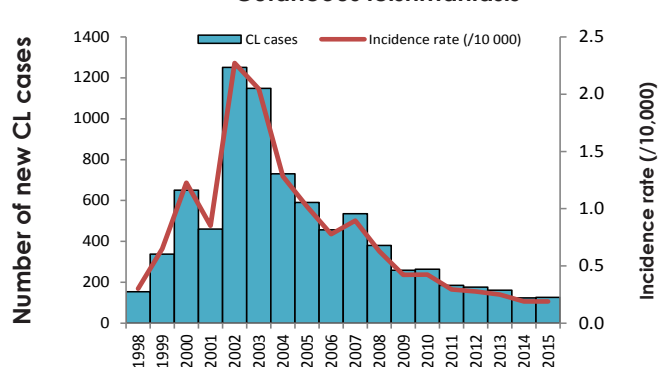


## Incidence rate/10,000 (at the national level) and number of new cases from 1998 to 2015

### Visceral leishmaniasis

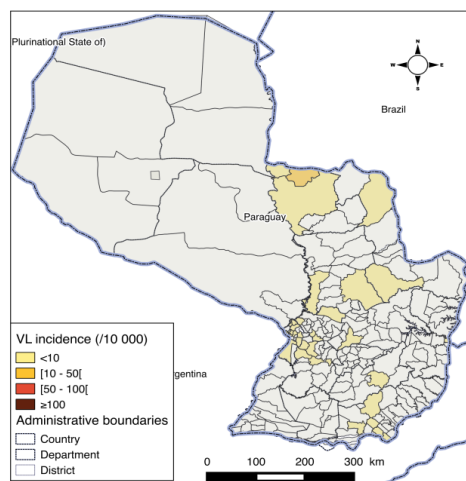


### Cutaneous leishmaniasis

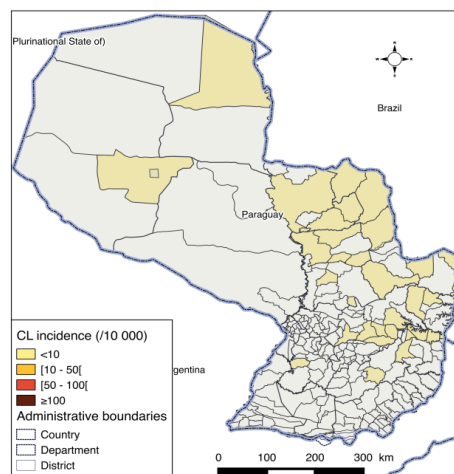


## Disease distribution of new VL and CL cases at district level per 10,000 population (2015)

### Visceral leishmaniasis



### Cutaneous leishmaniasis



[www.who.int/leishmaniasis/Map-VL-Paraguay-2015.png](http://www.who.int/leishmaniasis/Map-VL-Paraguay-2015.png)

The boundaries and names shown and the designations used on these maps do not imply the expression of any opinion whatsoever on the part of the World Health Organization concerning the legal status of any country, territory, city or area or of its authorities, or concerning the delimitation of its frontiers or boundaries. Dotted and dashed lines on maps represent approximate border lines for which there may not yet be full agreement.

Map production: WHO/HTM/NTD/IDM

[www.who.int/leishmaniasis/Map-CL-Paraguay-2015.png](http://www.who.int/leishmaniasis/Map-CL-Paraguay-2015.png)

## CONTROL AND SURVEILLANCE

Year Leishmaniasis National Control Programme (LNCP) was established:	Not available
Type of surveillance:	Integrated
Is there a vector control programme?	Yes
Type of insecticide used for Indoor residual Spraying (IRS):	Pyrethroid
Year latest national guidelines:	2010
Is leishmaniasis notifiable (mandatory report)?	Yes
Is there a reservoir host control programme?	Yes
Number of leishmaniasis health facilities:	Not available

## DIAGNOSIS

	VL	CL	PKDL	MCL
Number of people screened actively for:	No data	No data	N/A	N/A
Number of people screened passively for:	No data	No data	N/A	N/A
Cases diagnosed by RDT* <sup>a</sup> (% , # RDT+/ total VL cases):	100% (92/92)	N/A	N/A	N/A
Proportion of positive RDT* (% , # RDT+/total RDT):	No data	N/A	N/A	N/A
Cases diagnosed by direct exam <sup>a*</sup> (parasitology) (% , # slides + / total cases):	No data	97% (118/122)	N/A	N/A
Proportion of positive slides* (% , # slides + / total slides):	No data	No data	N/A	N/A
Cases diagnosed clinically* (% , # clinical cases/ total cases):	0% (0/92)	2% (3/122)	N/A	N/A
Proportion of CL cases with lesions equal to or greater than 4cm*:	N/A	No data	N/A	N/A
Proportion of CL cases with 4 or more lesions*(% , # CL cases/ total CL cases):	N/A	No data	N/A	N/A
Percentage of cases with HIV coinfection*:	13% (12/92)	N/A	No data	N/A

N/A = Not applicable; RDT = rapid diagnostic test; HIV = human immunodeficiency virus; <sup>a</sup>In the Region of the Americas, the type of laboratory confirmation for VL (RDT or parasitology) is not specified.

## TREATMENT AND MEDICINES

- ▶ Is treatment provided for free in the public sector? **Yes**
- ▶ Antileishmanial medicines included in the National Medicine List: **Amphotericin B deoxycholate, Liposomal amphotericin B<sup>†</sup>, Meglumine antimoniate**  
<sup>‡</sup> Available but not included or registered

### TREATMENT OUTCOME

	VL	CL
Proportion of cases treated*(% , # treated cases/ total cases):	No data	No data
Initial cure rate*(% , # cases initially cured /total cases):	42% (39/92)	65% (79/122)
Failure rate <sup>4*</sup> (% , # patients with treatment failure /total cases):	No data	No data
Case fatality rate <sup>5*</sup> (% , # patients who died/ total cases):	9% (8/92)	1% (1/122)

VL = visceral leishmaniasis; CL = cutaneous leishmaniasis; PKDL = post-kala-azar dermal leishmaniasis; MCL = mucocutaneous leishmaniasis

<sup>4</sup> Failure in this country is defined as: "A patient who does not improve, or who gets worse during the treatment period"; <sup>5</sup> Case-fatality rate includes deaths related to leishmaniasis only. \* These indicators only apply to new cases.